

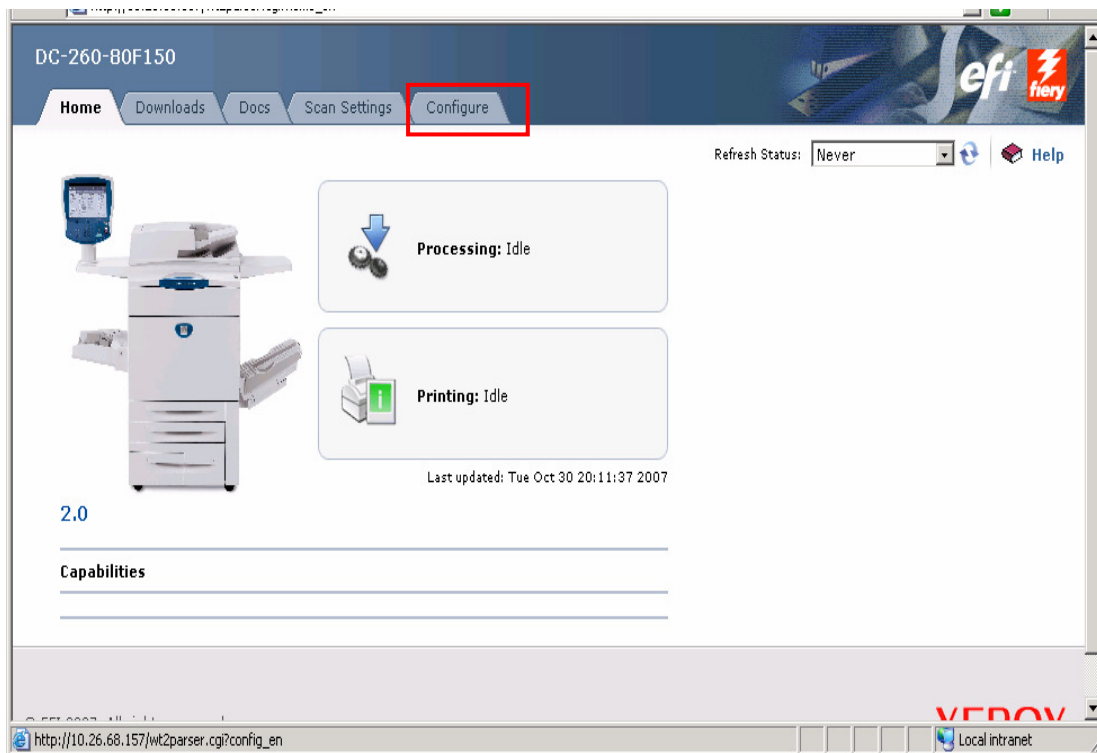
DOCUCOLOR 242/252/260: RESETTING FIERY DEFAULTS & REBOOTING SYSTEM

1. Print a Configuration page at the DocuColor for the networking information 1st.
Configuration(system settings list) instructions:

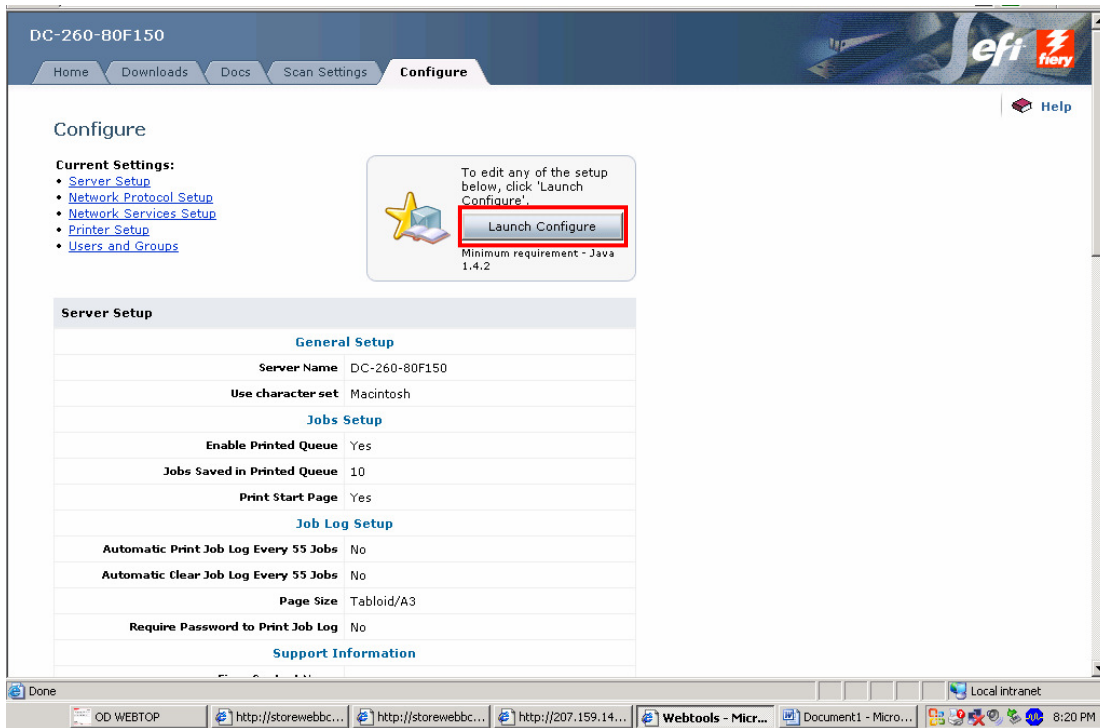
- a) Press the [Machine Status] button on the Control Panel.
- b) Select the [Billing Meter / Print Reports] tab on the Touch Screen.
- c) Select the [Print Report / List] button.
- d) Select the [Network Controller Jobs Report] button. The Network Controller Jobs Report button will be displayed.
- e) Select the [System Settings List] button.
- f) Press the [Start] button on the Control Panel. The System Settings (Configuration) Report will print.
- g) Select the [Close] button on the Touch Screen three times to exit.

2. Launch **Retrieve Scanned Document** from Webtop (open your WEBSCAN)

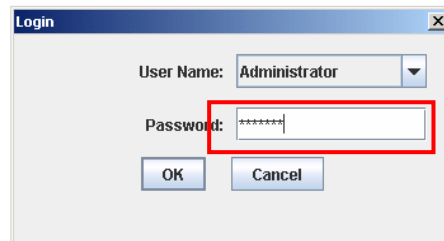
3. At the WebTools Home click the **Configure** tab



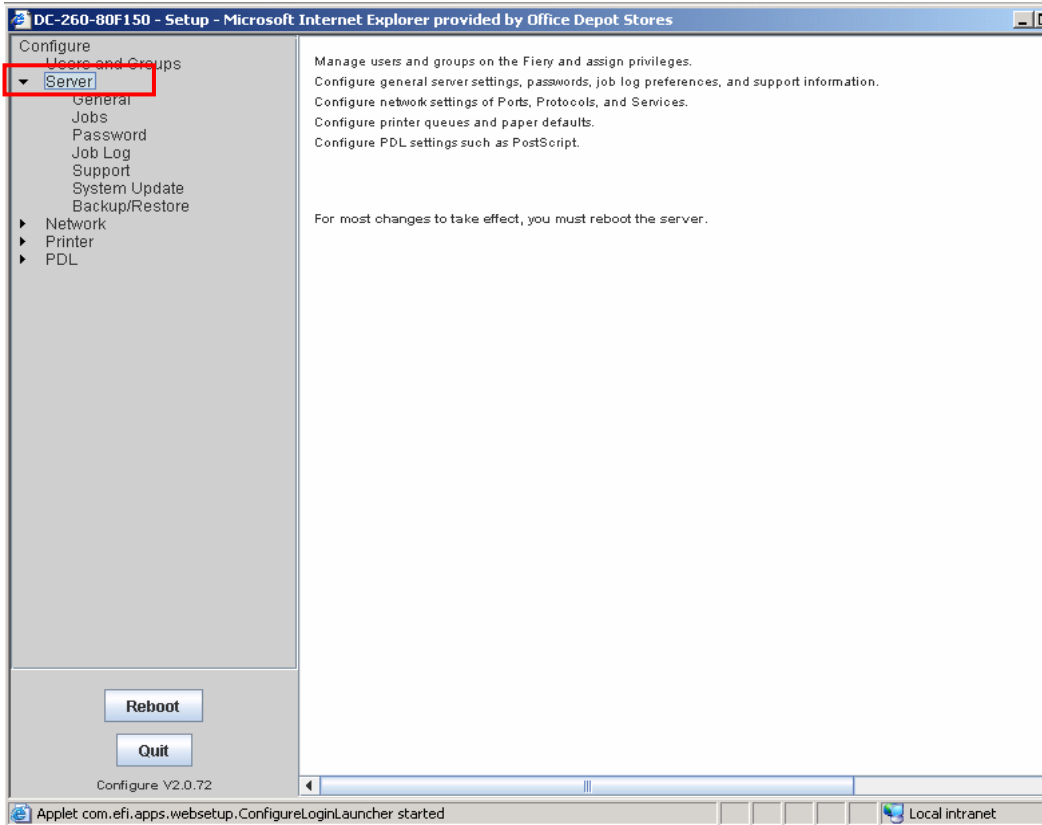
4. Click **Launch Configure**



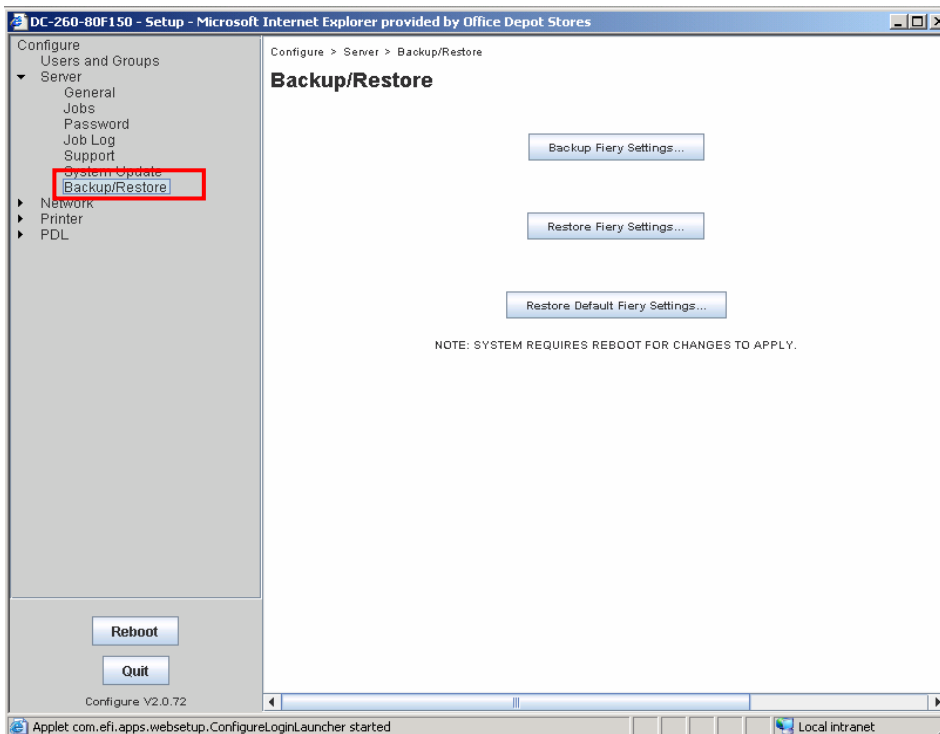
5. At the logon window, type **Fiery.1** in the password box



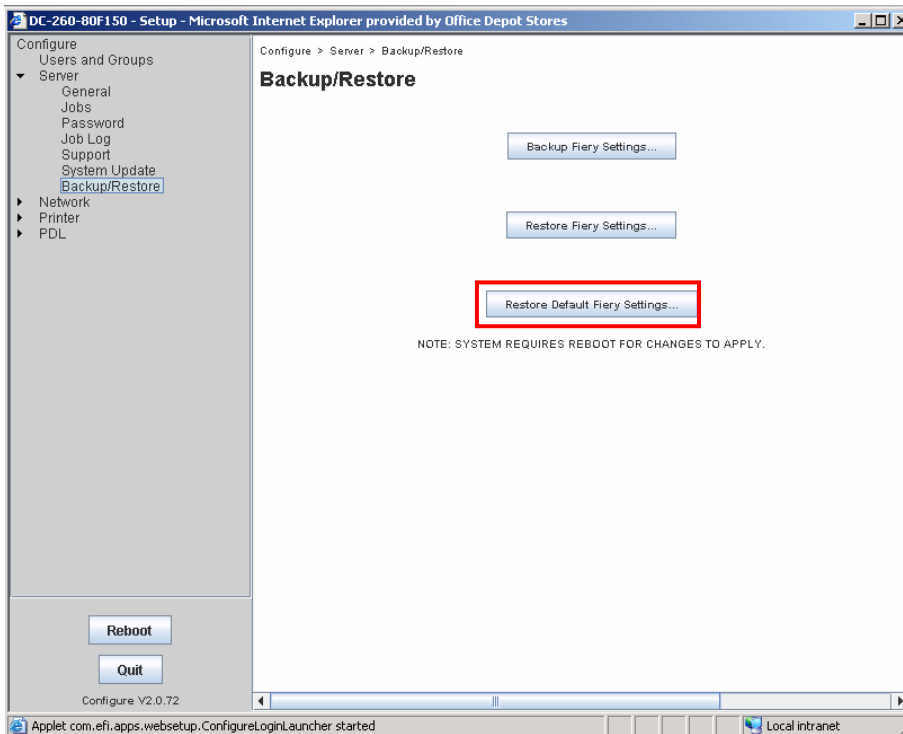
6. When the Configure menu loads, click **Server** on the menu on the left



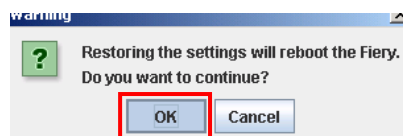
7. Select **Backup/Restore** from the Server menu



8. Click on the **Restore Default Fiery Settings** box



9. Reply **OK** to Do you want to continue?



10. When the restore has completed successfully, click **OK** to reboot the Fiery

11. Wait for the Fiery to reboot. This will take about 4 minutes.

12. Using the information from the Configuration report(*SEE BELOW), re-enter the networking information through the DocuColor 242/252 User Interface touch screen

***NETWORK INFORMATION-ON CONFIGURATION SHEET IS FOUND:**

On the front page scroll down until you see NETWORK SETUP, scroll down further to Ethernet Setup. You will find IP Address, Subnet Mask and Gateway Address. The subnet mask for your store will always be 255.255.255.0 and the Gateway will always be the same as your IP except the last octet will be a 1 not 157. In order to get the period or dots just hit the next key.

- Press the **Login/Logout** button
- Enter the System Administrator Login ID: **11111**
- Click **Confirm**
- Click **System Settings**
- Click **System Settings**
- Use the **Down arrow** on the bottom of the screen navigate to the Network Settings window
- Click **Network Controller Settings**
- Click **Network Settings**
- Enter the networking information

- | | |
|-----------------------------|---|
| (a) TCP/IP: Get IP Address | Select "change settings" and set to Manual & save |
| (b) TCP/IP: IP Address | 10.xxx.xxx.157 (a 2 nd Full Serve color will be .164) |
| (c) TCP/IP: Subnet Mask | 255.255.255.0 |
| (d) TCP/IP: Gateway Address | 10.xxx.xxx.1 |

- Click **Close** to close the next 3 windows
- Click **Exit** to logout

POWER MACHINE OFF..WAIT UNTIL BLUE SERVICES LIGHT GOES OUT AND POWER UP

WILL TAKE FIERY (NETWORK SETTINGS) APPROX. 4 MIN TO BOOT UP**