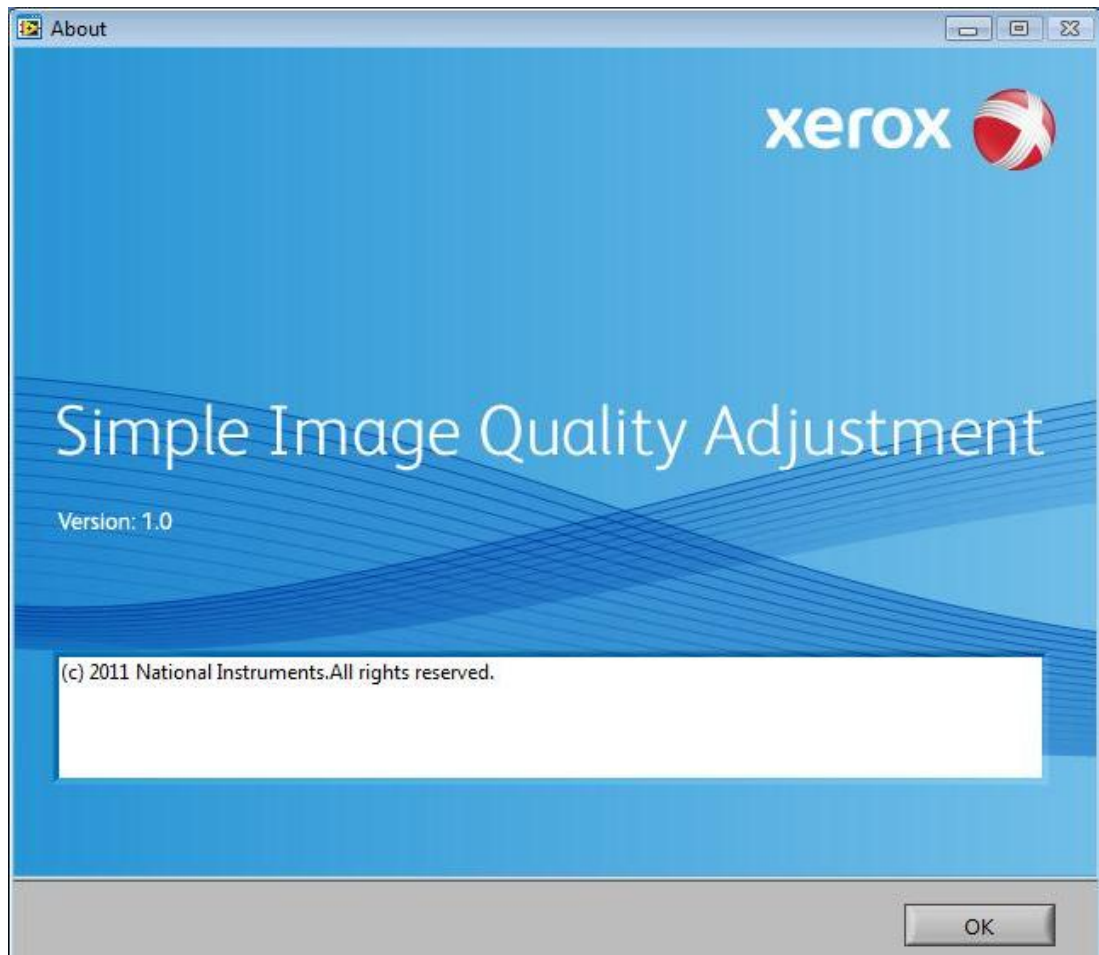


# C75/J75 Simple Image Quality Adjustment (SIQA) v2.0 Software Installation Instructions



## ***Introduction***

This document support the install of the software for using the new application, called SIQA (Simple Image Quality Adjustment).

## ***Environment - Prerequisites***

- Client PC (OS: Windows-Vista, XP, Win 7) **OR** use EFI DFE standalone server
- SIQA Software on USB or CD
- SIQA black background sheet file (pdf) on USB or CD

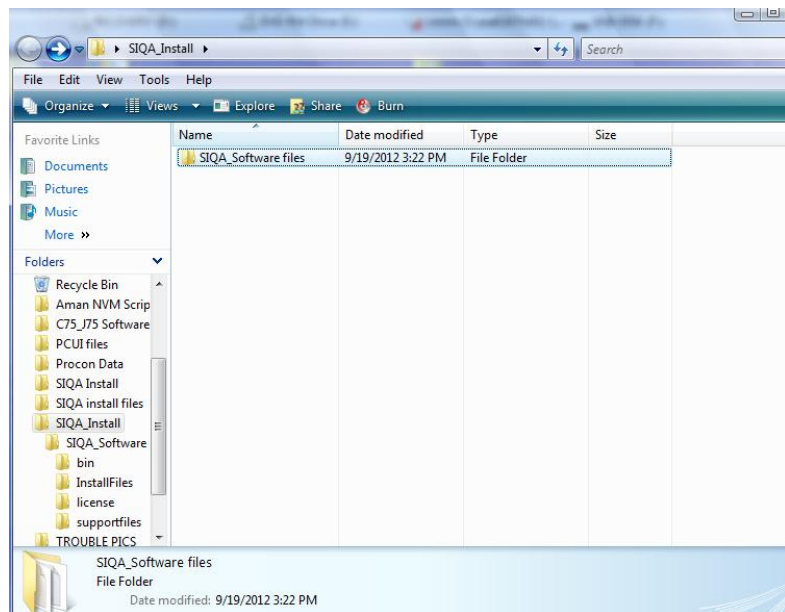
## PC Setup

---

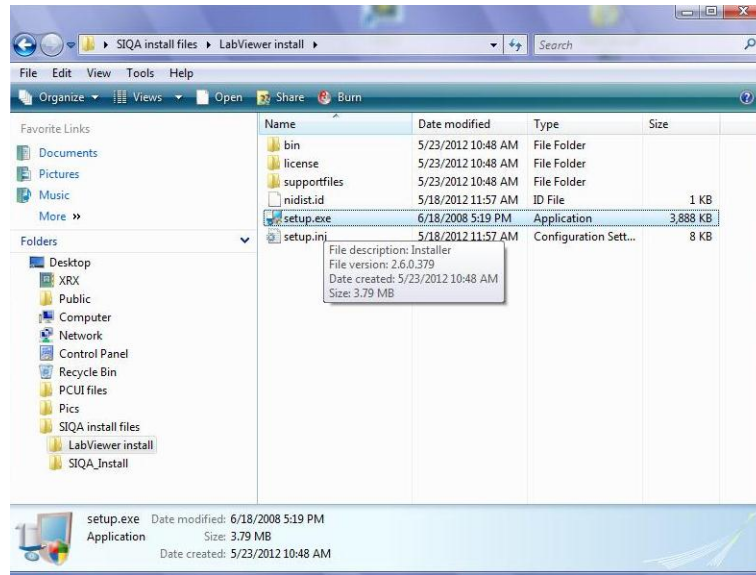
1. Copy the folder **SIQA Install** folder on the targeted desktop PC



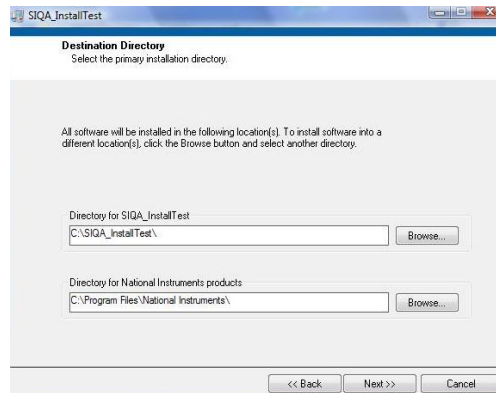
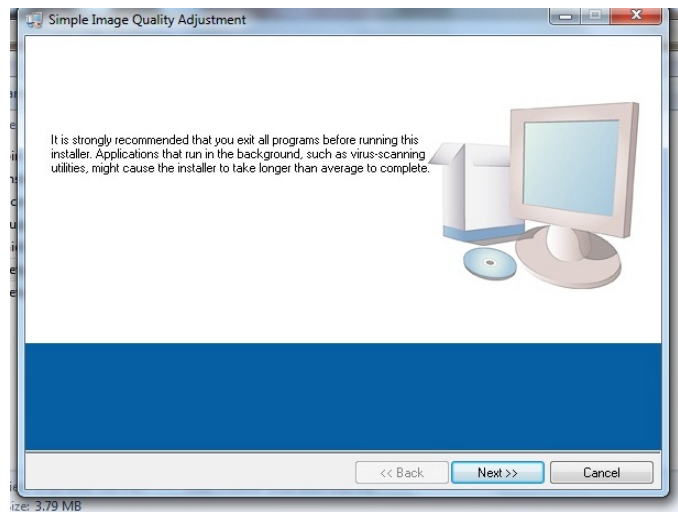
2. Double-click the **SIQA Install files** folder on the Desktop to open the folder.
3. Double-click the **SIQA\_Software files** folder to open the folder.



4. Double-Click the **setup.exe** icon

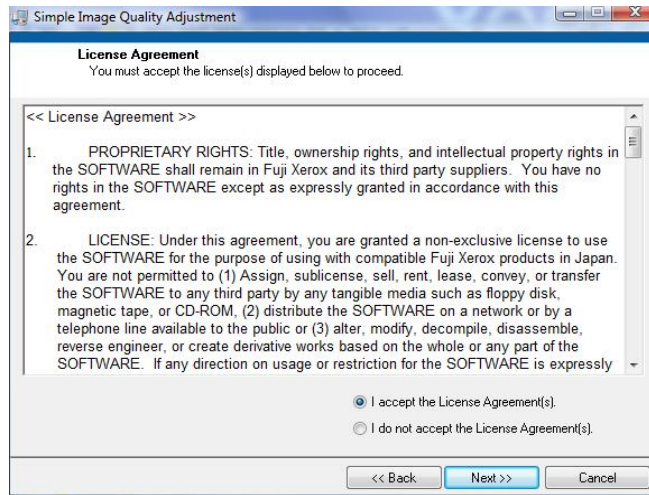


5. The following screens will appear:



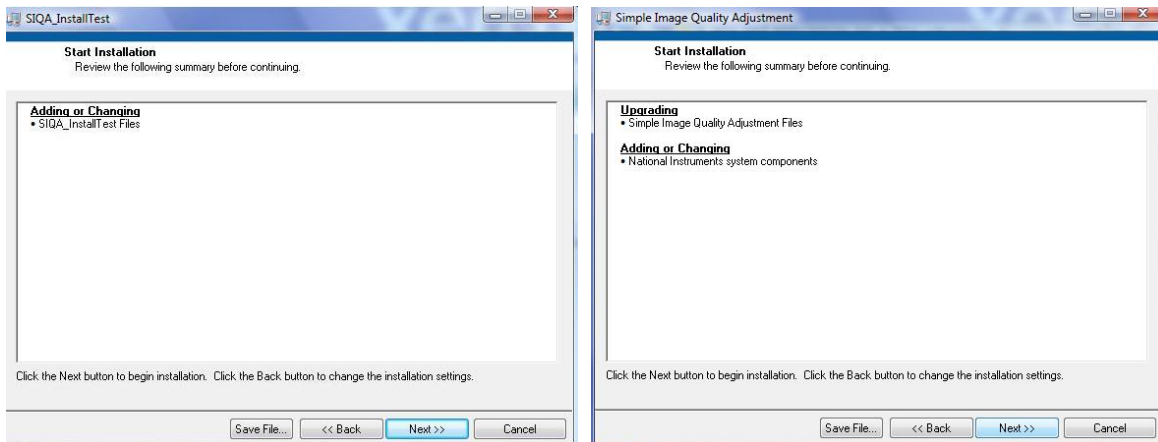
6. Select **Next**

7. Select ***I accept the License Agreement(s)*** on this screen and select **Next**.

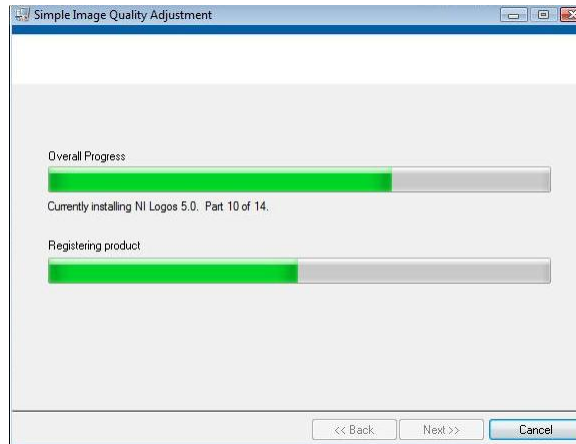


8. On the ***Start Installation*** screen, select **Next** –

**NOTE:** *If you are upgrading or installing the software one of these screens will appear.*

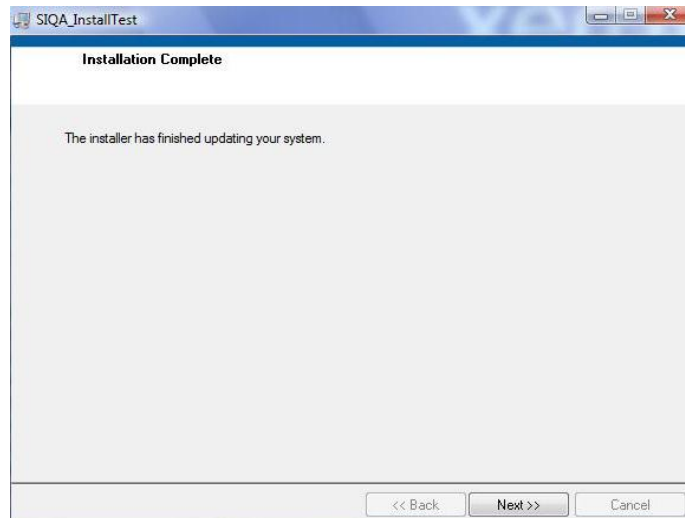


9. The progress of the **Simple Image Quality Adjustment** install will display.

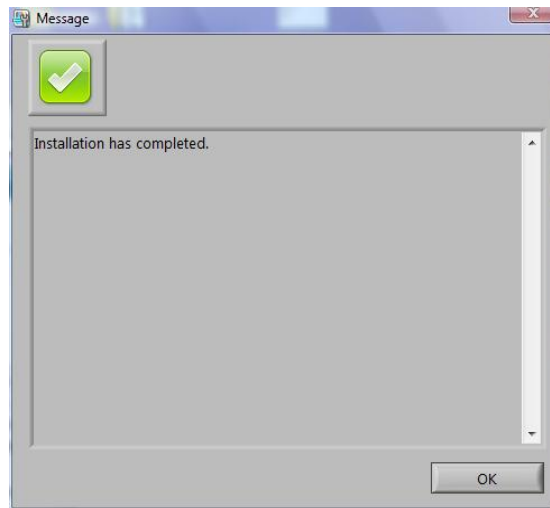


10. When the next screen is displayed indicating that the Install is completed select **Next**.

**NOTE:** Please wait while the software completes the installation. It may take several minutes.



11. When the **Installation has completed** message is displayed, select **OK**.

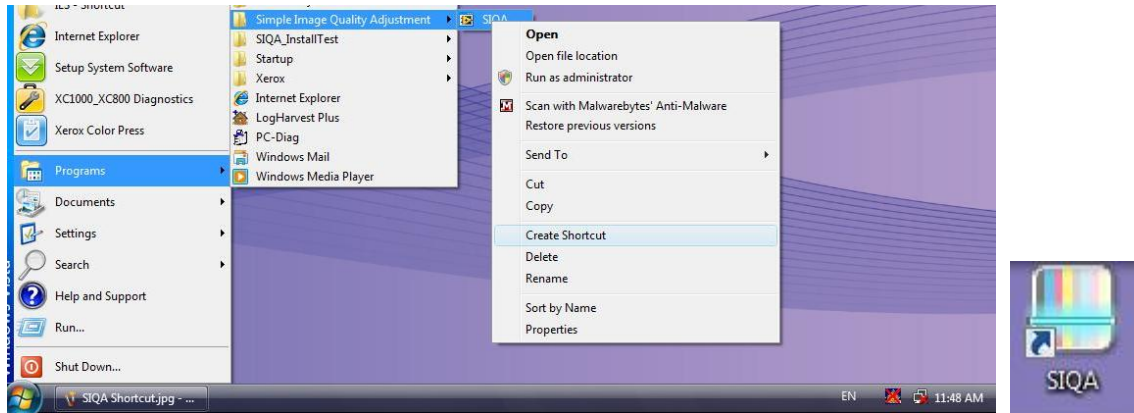


**NOTE:** If prompted, select **Restart** to reboot the PC.



12. Enter the User Name and Password as required.
13. Close the **SIQA\_install** folder.
14. Create a shortcut on the Desktop for the SIQA program:
  - Open **Program/Simplified Image Quality Adjustment/ SIQA** from the Windows globe
  - Right-click the icon to create the shortcut
  - Drag the shortcut on to the desktop

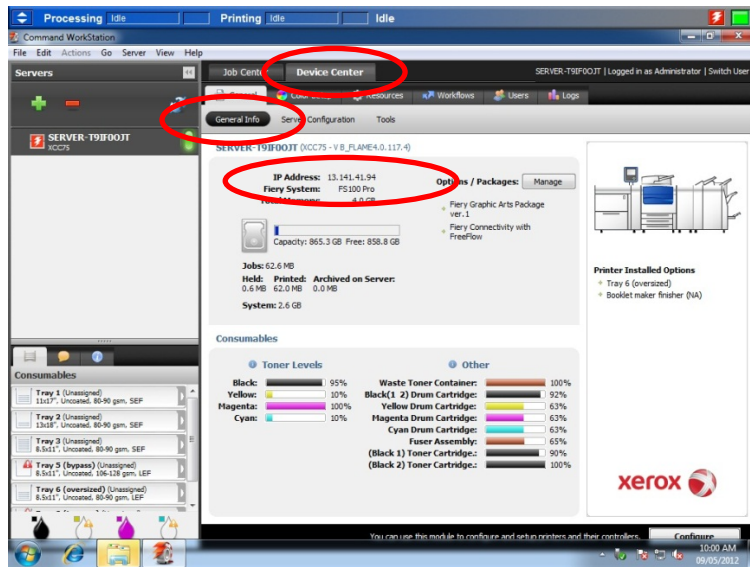
**NOTE:** For Windows 7, simply drag the Icon from the Windows globe program menu.



## Establishing Communication Between the PC and the Printer

### EFI Standalone

1. Ensure a cross-over Ethernet cable is installed between the laptop and the Printer.
2. At the DFE – locate the IP address by accessing the **Command Workstation > Device Center > General**
3. Record the IP address: \_\_\_\_\_

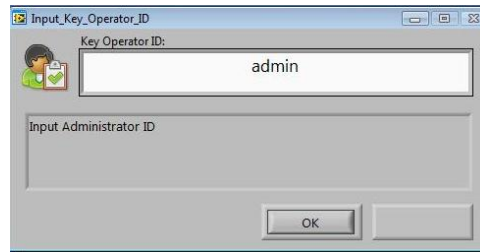


4. Double-click the **SIQA** icon from the desktop, the following screen will appear, enter the IP recorded on the previous step and press **OK**.

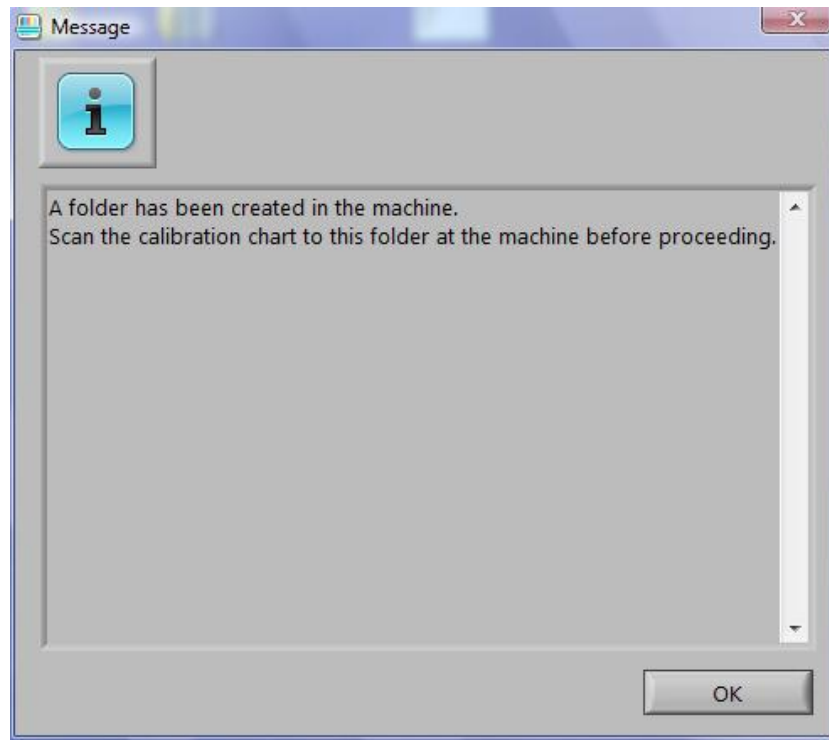




5. Enter the Key Operator ID (**admin**) and press **OK**.



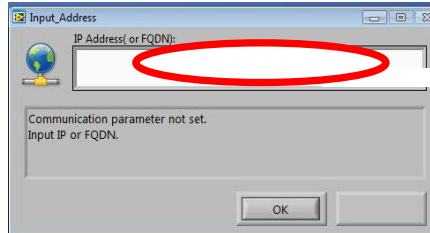
6. A folder will be created on the Printer hard drive and the following message will appear:



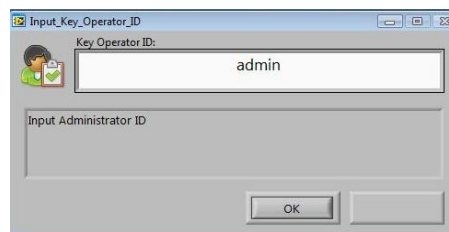
7. Click **OK**
8. The **SIQA** main screen will open. Refer to the C75/J75 SIQA Auto Registration instructions for Alignment/Registration or C75/J75 SIQA Auto Density Uniformity instructions to perform needed adjustments.

### **3<sup>rd</sup> Party PC for EFI Standalone or Integrated EFI**

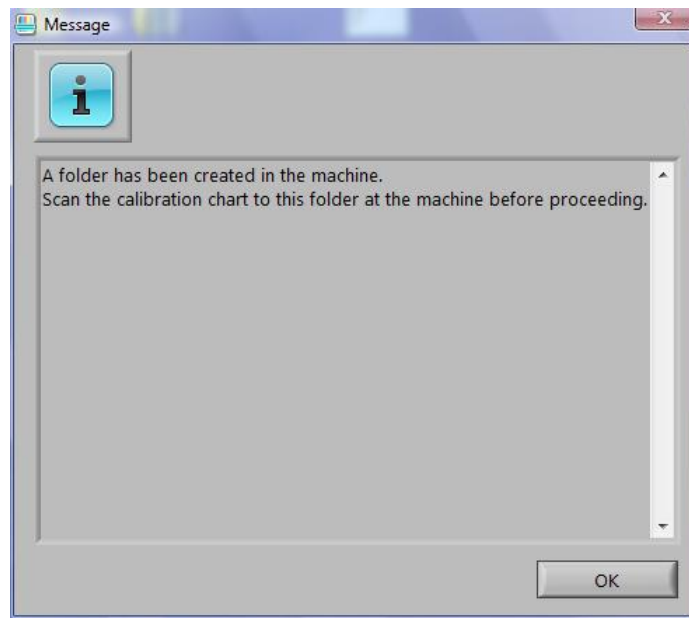
1. Ensure a cross-over Ethernet cable is installed between the DFE unit and the Printer. At the DFE or on the printed configuration sheet – record the IP address of the EFI unit\_\_\_\_\_.
2. Double-click the SIQA icon from the desktop. Enter the IP recorded on the previous step when the following screen appears and press **OK**.



3. Enter the Key Operator ID (**admin**) and press **OK**.



4. A folder will be created on the Printer hard drive and the following message will appear:

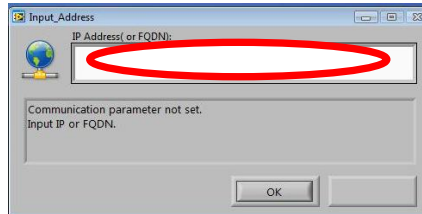


5. Click **OK**.
6. The SIQA main screen will open. Refer to the C75/J75 SIQA Auto Registration instructions for Alignment/Registration or C75/J75 SIQA Auto Density Uniformity instructions to perform needed adjustments.

## **FFPS Standalone PC**

On a FFPS configuration, a hub is installed with three Ethernet cables plugged in, one from the wall drop, one to the FFPS DFE and one to the Printer.

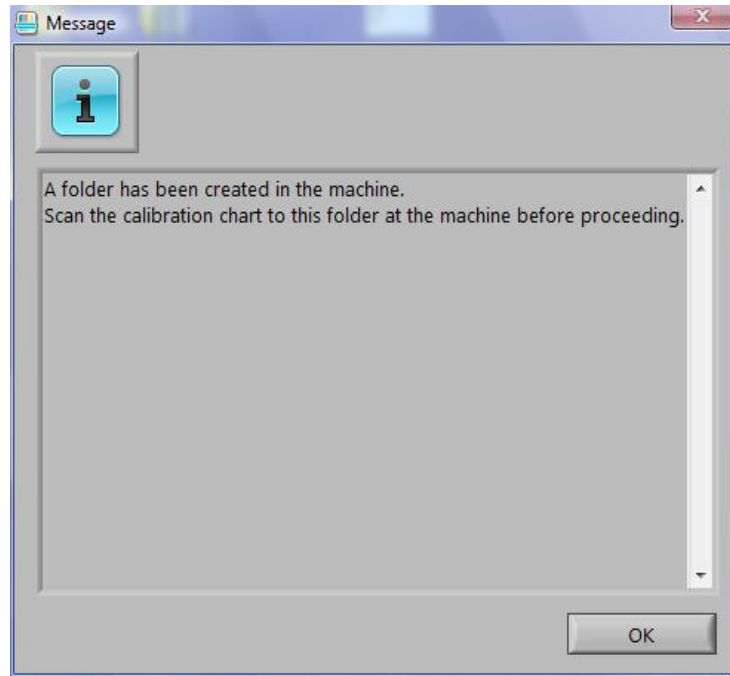
1. At the printer – record the IP address from the ***Machine status*** \_\_\_\_\_
2. Double-click the ***SIQA*** icon from the desktop, the following screen will appear, enter the IP address recorded on the previous step and press ***OK***.



3. Enter the Key Operator ID (***admin***) and press ***OK***.



4. A folder will be created on the Printer hard drive and the following message will appear. Press ***OK***.



5. The SIQA main screen will open. Refer to the C75/J75 SIQA Auto Registration instructions for Alignment/Registration or C75/J75 SIQA Auto Density Uniformity instructions to perform needed adjustments.

## **TROUBLESHOOTING**

---

For problem solving, refer to ***OF-08 SIQA Installation and Functionality Problems***