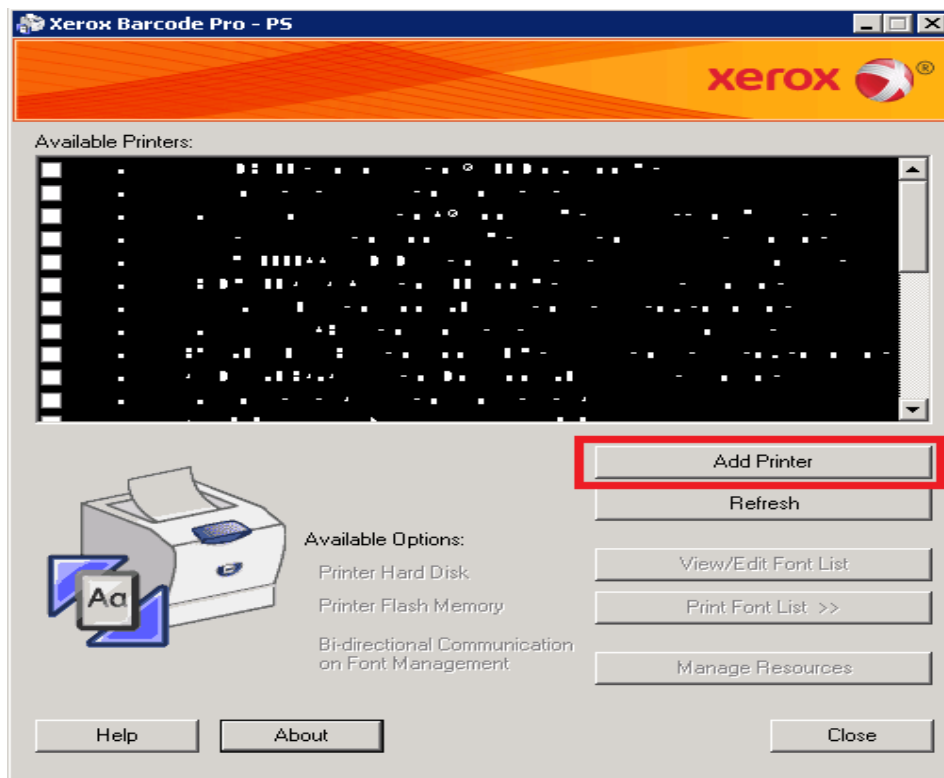




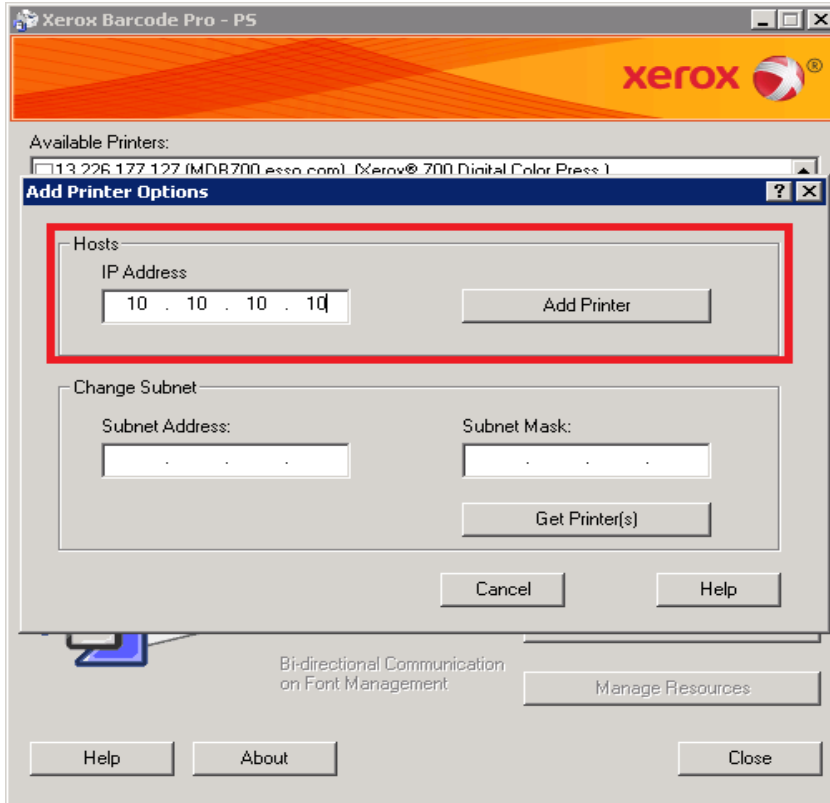
Installing SAP Barcode Fonts on the WorkCentre 78xx Family.

PostScript Fonts Package;

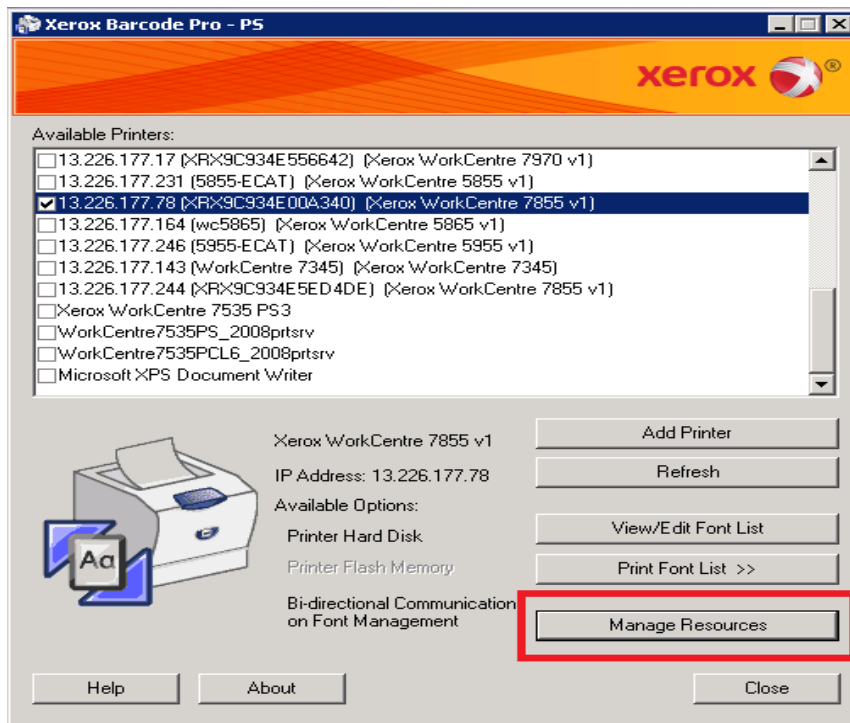
- Go to http://www.office.xerox.com/perl-bin/formeng.pl?form=sap_bar_code_index and request the postscript barcode solution.
- Extract the contents of XRX_PS_BarcodeFontsEnterprise.zip to a client workstation on the same network as the printer you wish to install the fonts.
- Navigate to folder XRX_PS_BarcodeFontsEnterprise/BCPRO_Vx.x.x.xx/Disk1.
- Run the Xerox Barcode Pro - PS.msi file to install the Xerox Barcode Pro-PostScript package.
- Open the Xerox Barcode Pro-PostScript utility.
- Click Add printer.



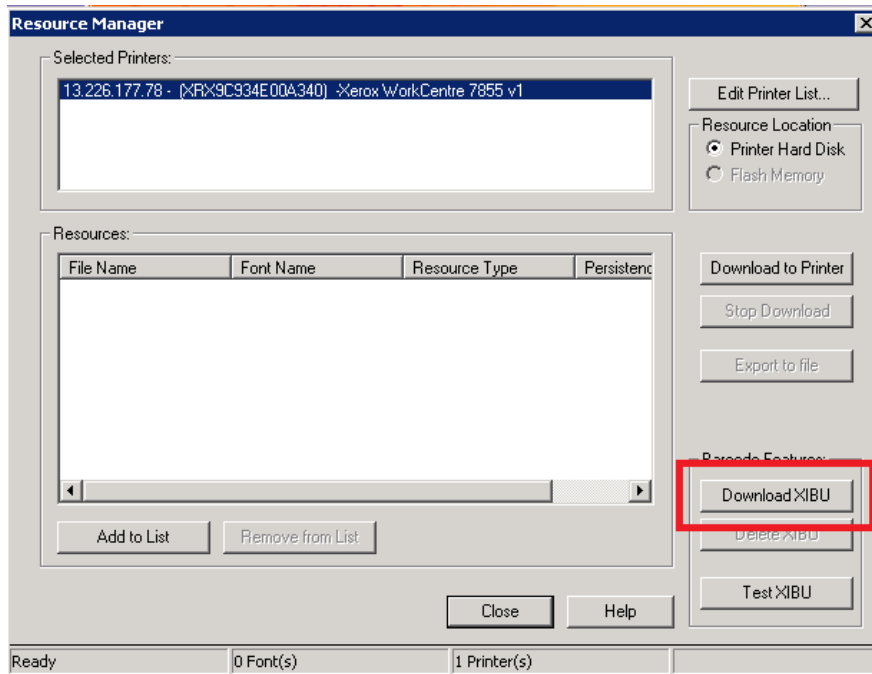
- Enter the ip address of your printer and click add printer.



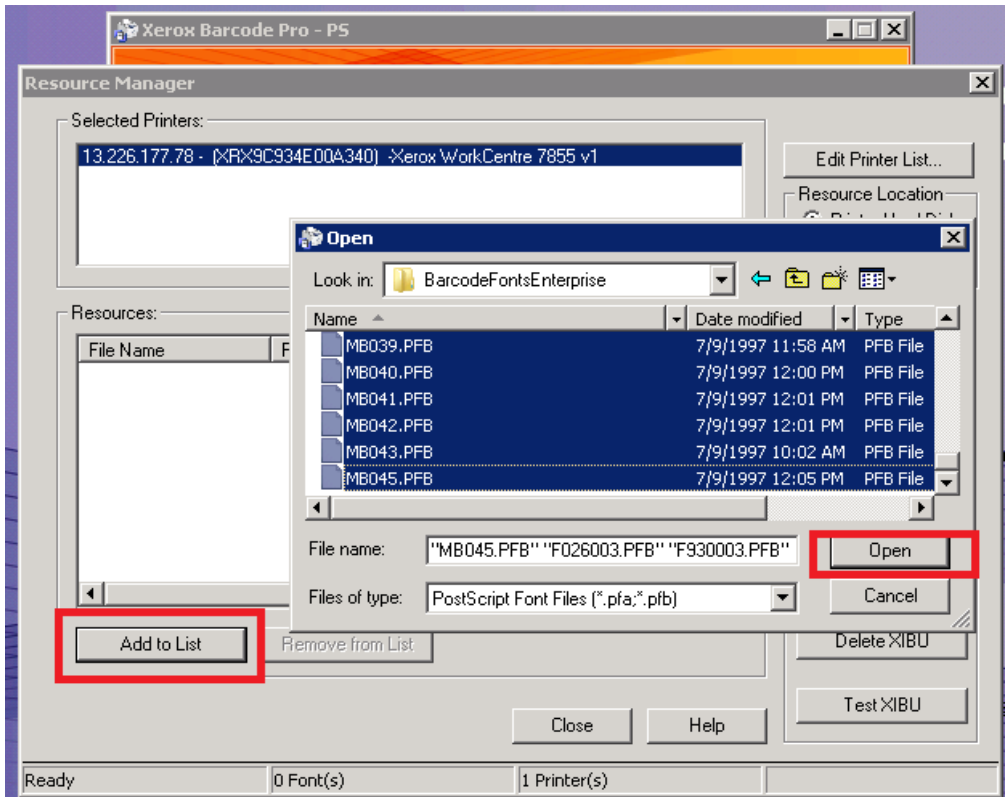
- Select manage resources.



- Click download XIBU



- Click add to list, and navigate to XRX_PS_BarcodeFontsEnterprise/BCPRO_Vx.x.x.xx/BarcodeFonts/Barcodefontsenderprise, select all the fonts within this folder and click open.



- Click download to printer.

