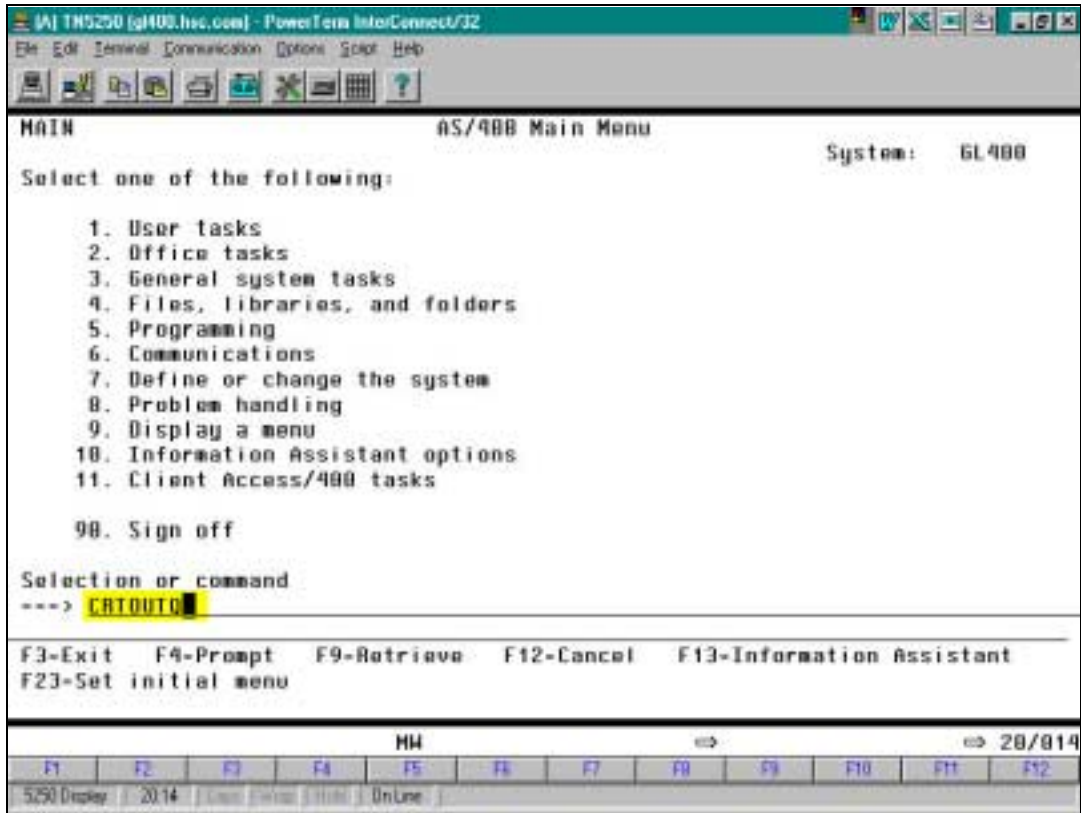
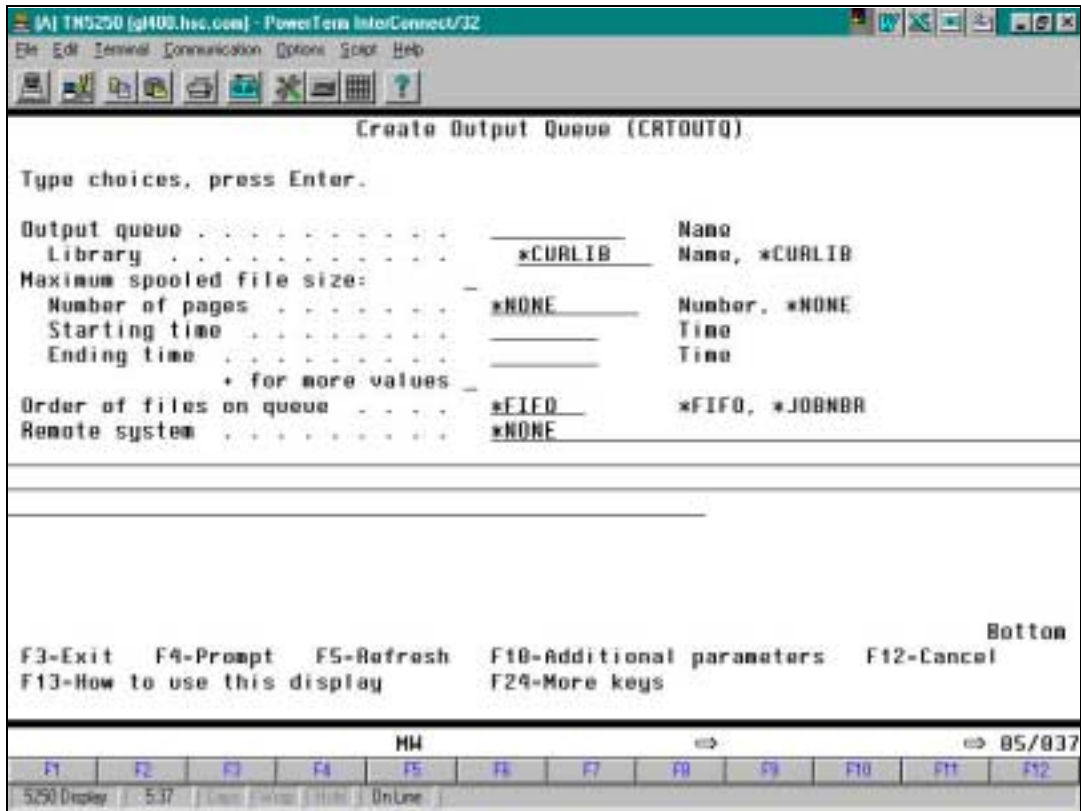


Printing to a Fiery Device from AS/400

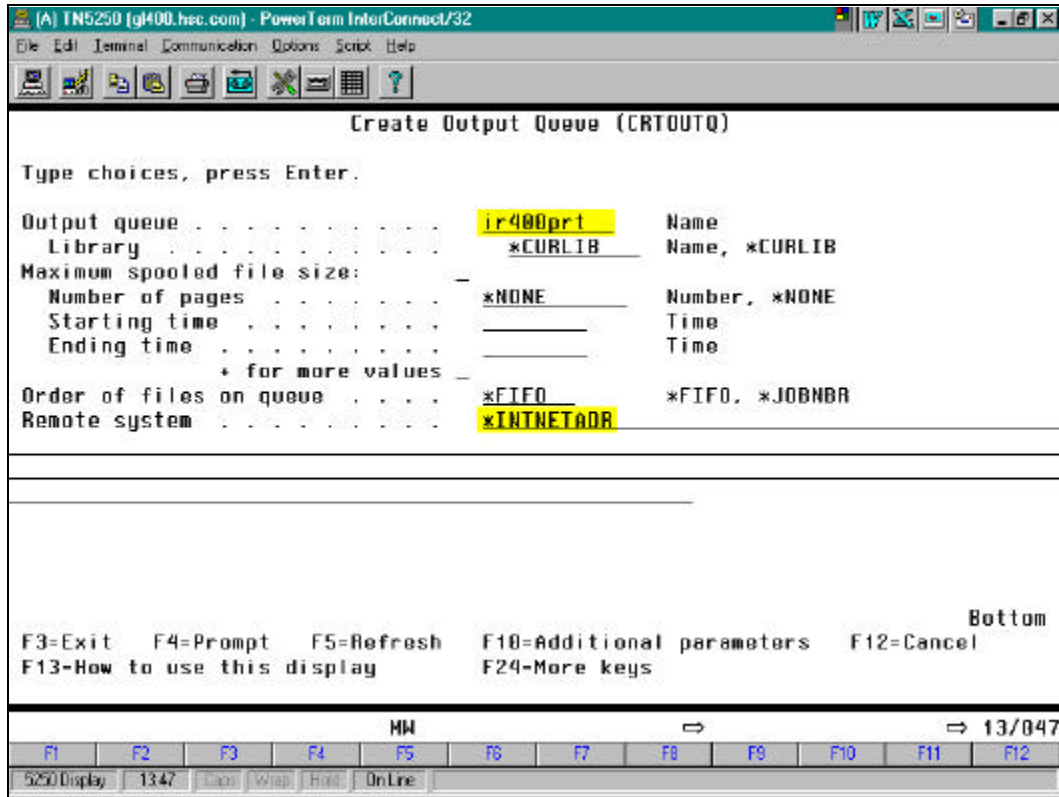
1. At a Terminal, Login as SECOFR
2. At a command prompt, type CRTOUTQ



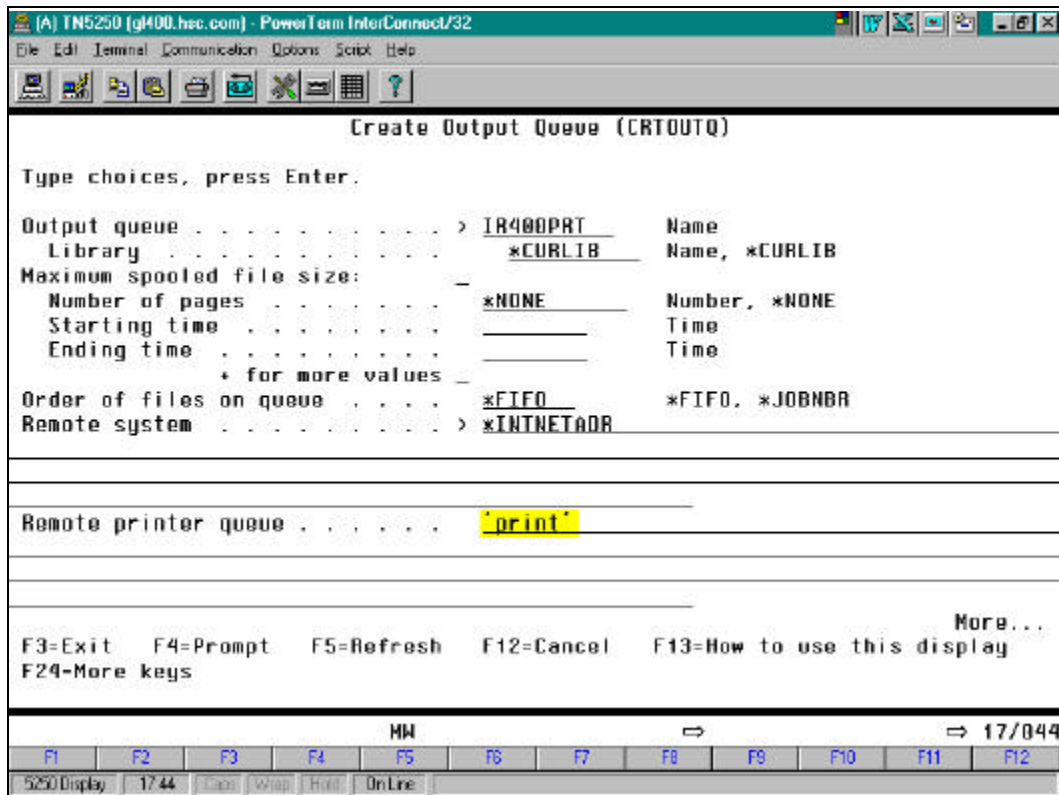
3. The **Create Output Queue** Screen will come up.



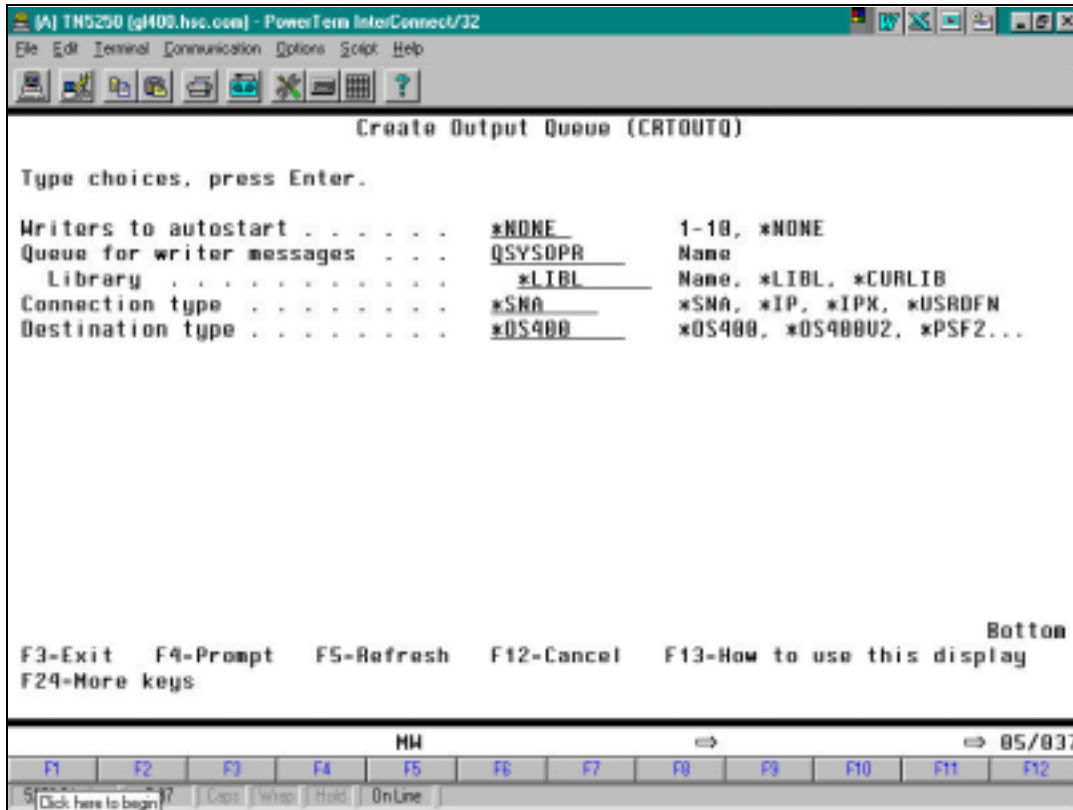
4. Insert an **Output Queue** name and change **Remote System** to *INTNETADR



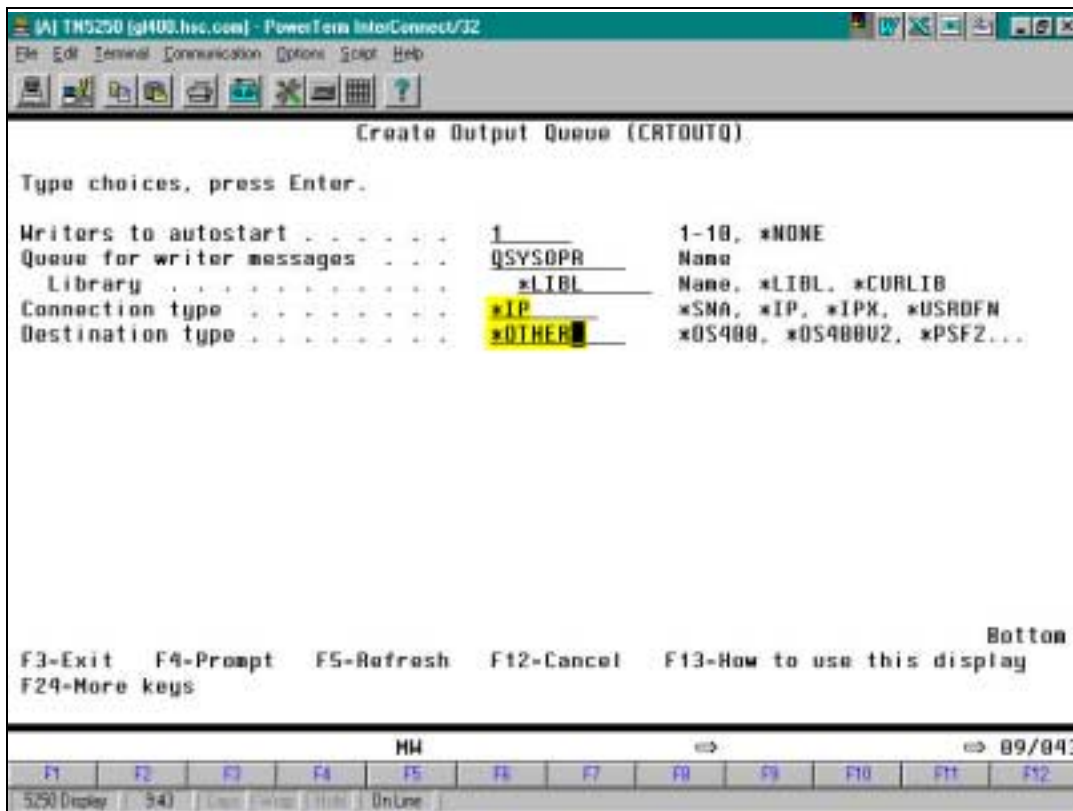
5. Press the **F10 Key** for **Additional Parameters**
6. In **Remote Printer Queue**, add the Fiery Queue Name (' print ', ' hold ', or ' direct '); note that the queue name must be lowercase, and must be contained in 'single quotes'.



7. Press **Page Down** to go to the next set of parameters



8. Change **Writers to autostart** to 1; **Connection type** to *IP and **Destination type** to *OTHER



- Press F10 to show additional parameters

```

[A] TN5250 (q1400.hsc.com) - PowerTerm InterConnect/32
File Edit Terminal Communication Options Script Help
Create Output Queue (CRTOUTQ)

Type choices, press Enter.

Writers to autostart . . . . . > 1          1-10, *NONE
Queue for writer messages . . . . QSYSOPR  Name
  Library . . . . . *LIBL          Name, *LIBL, *CURLIB
Connection type . . . . . > *IP        *SNA, *IP, *IPX, *USRDEFN
Destination type . . . . . > *OTHER    *OS400, *OS400U2, *PSF2...
Host print transform . . . . . *YES      *YES, *NO
Manufacturer type and model . . . . IBM92011
Workstation customizing object . . *NONE  Name, *NONE
  Library . . . . .           Name, *LIBL, *CURLIB
Image configuration . . . . . *NONE    *NONE, *IMGAB1, *IMGAB2...
Internet address . . . . .
Destination options . . . . . *NONE

Print separator page . . . . . *YES    *YES, *NO

F3-Exit  F4-Prompt  F5-Refresh  F12-Cancel  F13-How to use this display
F24-More keys

HW                               ⇐⇒ 11/037
F1  F2  F3  F4  F5  F6  F7  F8  F9  F10 F11 F12
5250 Display | 11:37 | [Esc] [F1] [F2] [F3] [F4] [F5] [F6] [F7] [F8] [F9] [F10] [F11] [F12]

```

- Change **Host print transform** to *YES; **Manufacturer type and model** to *HP5SI, OR *HP4, OR *HPII and **Internet address** to '###.###.###.###'

```

[A] TN5250 (q1400.hsc.com) - PowerTerm InterConnect/32
File Edit Terminal Communication Options Script Help
Create Output Queue (CRTOUTQ)

Type choices, press Enter.

Writers to autostart . . . . . > 1          1-10, *NONE
Queue for writer messages . . . . QSYSOPR  Name
  Library . . . . . *LIBL          Name, *LIBL, *CURLIB
Connection type . . . . . > *IP        *SNA, *IP, *IPX, *USRDEFN
Destination type . . . . . > *OTHER    *OS400, *OS400U2, *PSF2...
Host print transform . . . . . *YES      *YES, *NO
Manufacturer type and model . . . . *HP5SI
Workstation customizing object . . *NONE  Name, *NONE
  Library . . . . .           Name, *LIBL, *CURLIB
Image configuration . . . . . *NONE    *NONE, *IMGAB1, *IMGAB2...
Internet address . . . . . > '172.31.38.59'
Destination options . . . . . *NONE

Print separator page . . . . . *YES    *YES, *NO

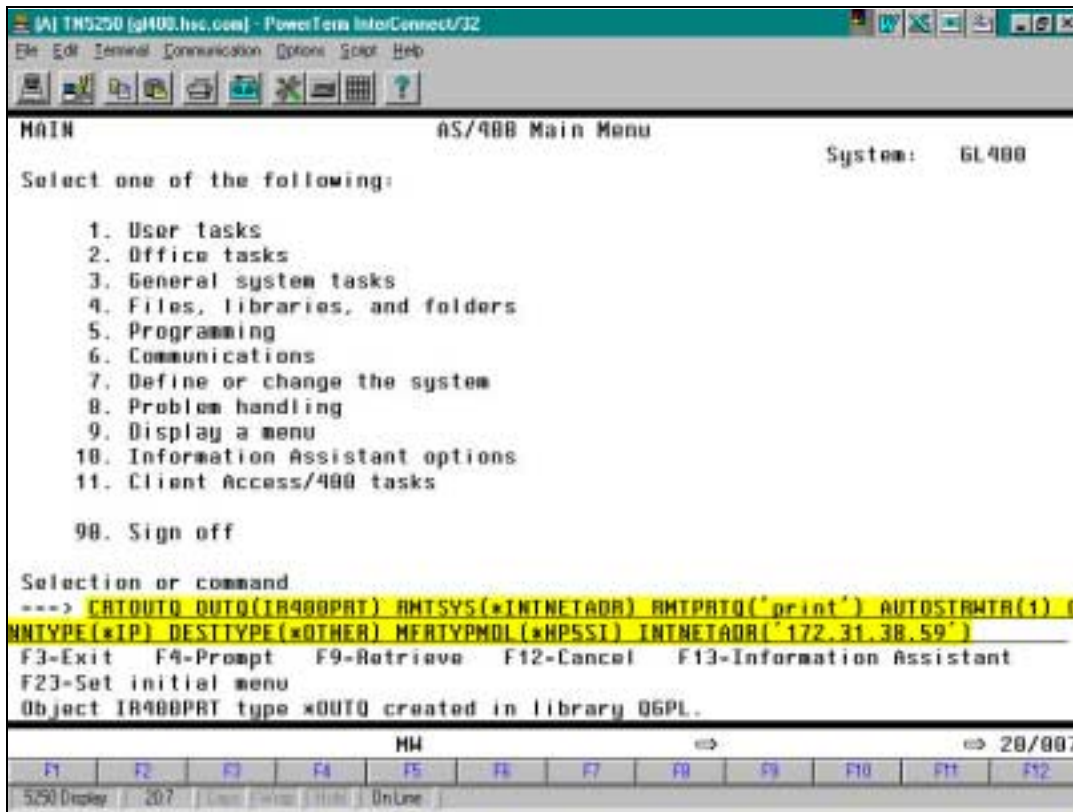
F3-Exit  F4-Prompt  F5-Refresh  F12-Cancel  F13-How to use this display
F24-More keys

HW                               ⇐⇒ 05/037
F1  F2  F3  F4  F5  F6  F7  F8  F9  F10 F11 F12
5250 Display | 5:37 | [Esc] [F1] [F2] [F3] [F4] [F5] [F6] [F7] [F8] [F9] [F10] [F11] [F12]

```


13. The command can also be completely entered from the Command Line:

```
CRTOUTQ OUTQ(IR400PRT) RMFSYS(*INTNETADR) RMPRTQ('print')  
AUTOSTRWTR(1) CNNTYPE(*IP) DESTTYPE(*OTHER) MFRTYPMDL(*HP5SI)  
INTNETADR('###.###.###.###')
```



Note; you will not have full functionality from the Fiery device when printing from AS/400. You will have the same functionality as attaching an HP printer to the AS/400.